



blood

2012 120: 2454-2465

doi:10.1182/blood-2012-03-420489 originally published
online June 27, 2012

Revised International Prognostic Scoring System for Myelodysplastic Syndromes

Peter L. Greenberg, Heinz Tuechler, Julie Schanz, Guillermo Sanz, Guillermo Garcia-Manero, Francesc Solé, John M. Bennett, David Bowen, Pierre Fenaux, Francois Dreyfus, Hagop Kantarjian, Andrea Kuendgen, Alessandro Levis, Luca Malcovati, Mario Cazzola, Jaroslav Cermak, Christa Fonatsch, Michelle M. Le Beau, Marilyn L. Slovak, Otto Krieger, Michael Luebbert, Jaroslaw Maciejewski, Silvia M. M. Magalhaes, Yasushi Miyazaki, Michael Pfeilstöcker, Mikkael Sekeres, Wolfgang R. Sperr, Reinhard Stauder, Sudhir Tauro, Peter Valent, Teresa Vallespi, Arjan A. van de Loosdrecht, Ulrich Germing and Detlef Haase

Updated information and services can be found at:

<http://bloodjournal.hematologylibrary.org/content/120/12/2454.full.html>

Articles on similar topics can be found in the following Blood collections

[Clinical Trials and Observations](#) (3892 articles)

[Myeloid Neoplasia](#) (1213 articles)

Information about reproducing this article in parts or in its entirety may be found online at:

http://bloodjournal.hematologylibrary.org/site/misc/rights.xhtml#repub_requests

Information about ordering reprints may be found online at:

<http://bloodjournal.hematologylibrary.org/site/misc/rights.xhtml#reprints>

Information about subscriptions and ASH membership may be found online at:

<http://bloodjournal.hematologylibrary.org/site/subscriptions/index.xhtml>

Revised International Prognostic Scoring System for Myelodysplastic Syndromes

Peter L. Greenberg,¹ Heinz Tuechler,² Julie Schanz,³ Guillermo Sanz,⁴ Guillermo Garcia-Manero,⁵ Francesc Solé,⁶ John M. Bennett,⁷ David Bowen,⁸ Pierre Fenaux,⁹ Francois Dreyfus,¹⁰ Hagop Kantarjian,⁵ Andrea Kuendgen,¹¹ Alessandro Levis,¹² Luca Malcovati,¹³ Mario Cazzola,¹³ Jaroslav Cermak,¹⁴ Christa Fonatsch,¹⁵ Michelle M. Le Beau,¹⁶ Marilyn L. Slovak,¹⁷ Otto Krieger,¹⁸ Michael Luebbert,¹⁹ Jaroslaw Maciejewski,²⁰ Silvia M. M. Magalhaes,²¹ Yasushi Miyazaki,²² Michael Pfeilstöcker,² Mikkael Sekeres,²⁰ Wolfgang R. Sperr,¹⁵ Reinhard Stauder,²³ Sudhir Tauro,²⁴ Peter Valent,¹⁵ Teresa Vallespi,²⁵ Arjan A. van de Loosdrecht,²⁶ Ulrich Germing,¹¹ and Detlef Haase³

¹Stanford University Cancer Center, Stanford, CA; ²Hanusch Hospital, Boltzmann Institute for Leukemia Research, Vienna, Austria; ³Georg August Universität, Göttingen, Germany; ⁴Hospital Universitario La Fe, Valencia, Spain; ⁵The University of Texas, MD Anderson Cancer Center, Houston, TX; ⁶Hospital del Mar, Barcelona, Spain; ⁷James P. Wilmont Cancer Center, University of Rochester Medical Center, Rochester, NY; ⁸St James's University Hospital, Leeds, United Kingdom; ⁹Hôpital Avicenne, Assistance Publique-Hôpitaux de Paris (AP-HP)/University Paris XIII, Bobigny, France; ¹⁰Hôpital Cochin, AP-HP University of Paris V, Paris, France; ¹¹Heinrich-Heine University Hospital, Düsseldorf, Germany; ¹²Antonio e Biagio e C Arrigo Hospital, Alessandria, Italy; ¹³Fondazione Istituti di Ricovero e Cura a Carattere Scientifico Policlinico San Matteo and University of Pavia, Pavia, Italy; ¹⁴Institute of Hematology and Blood Transfusion, Praha, Czech Republic; ¹⁵Medical University of Vienna, Vienna, Austria; ¹⁶University of Chicago Comprehensive Cancer Research Center, Chicago, IL; ¹⁷Quest Diagnostics Nichols Institute, Chantilly, VA; ¹⁸Elisabethinen Hospital, Linz, Austria; ¹⁹University of Freiburg Medical Center, Freiburg, Germany; ²⁰Cleveland Clinic, Cleveland, OH; ²¹Federal University of Ceara, Fortaleza, Brazil; ²²Nagasaki University Graduate School of Biomedical Sciences, Nagasaki, Japan; ²³University Hospital of Innsbruck, Innsbruck, Austria; ²⁴University of Dundee, Scotland, United Kingdom; ²⁵Hospital Universitario Vall d'Hebron, Barcelona, Spain; and ²⁶VU University Medical Center, Amsterdam, The Netherlands

The International Prognostic Scoring System (IPSS) is an important standard for assessing prognosis of primary untreated adult patients with myelodysplastic syndromes (MDS). To refine the IPSS, MDS patient databases from international institutions were coalesced to assemble a much larger combined database (Revised-IPSS [IPSS-R], n = 7012, IPSS, n = 816) for analysis. Multiple statistically weighted clinical features were used to generate a prognostic categorization model. Bone marrow cytogenetics, marrow blast per-

centage, and cytopenias remained the basis of the new system. Novel components of the current analysis included: 5 rather than 3 cytogenetic prognostic subgroups with specific and new classifications of a number of less common cytogenetic subsets, splitting the low marrow blast percentage value, and depth of cytopenias. This model defined 5 rather than the 4 major prognostic categories that are present in the IPSS. Patient age, performance status, serum ferritin, and lactate dehydrogenase were significant

additive features for survival but not for acute myeloid leukemia transformation. This system comprehensively integrated the numerous known clinical features into a method analyzing MDS patient prognosis more precisely than the initial IPSS. As such, this IPSS-R should prove beneficial for predicting the clinical outcomes of untreated MDS patients and aiding design and analysis of clinical trials in this disease. (*Blood*. 2012;120(12):2454-2465)

Introduction

The myelodysplastic syndromes (MDS) consist of a heterogeneous spectrum of myeloid clonal hemopathies. The International Prognostic Scoring System (IPSS) has been an important standard for assessing prognosis of primary untreated adult MDS patients.¹ However, since its publication in 1997, modification of existing parameters and additional prognostic systems have been suggested as providing meaningful differences for patients' clinical outcomes,²⁻⁵ and the World Health Organization (WHO) added morphologic refinement of the French-American-British (FAB) classification.^{6,7} In addition, the WHO Prognostic Scoring System (WPSS)^{2,3} has provided new insights into prognostic variables, adding red blood cell (RBC) transfusion dependence along with IPSS cytogenetic classification and WHO dysplastic categories. Importantly, recent newer cytogenetic groupings are reported to be prognostically valuable and to

refine those features used in the IPSS.⁸ Additional variables suggested as providing prognostic information in MDS included serum lactate dehydrogenase (LDH),⁹⁻¹¹ ferritin,¹² and β_2 -microglobulin^{13,14} as well as marrow fibrosis¹⁵⁻¹⁷ and patient comorbidities and performance status.^{5,18-20}

To examine the prognostic impact of these new clinical and cytogenetic variables and attempt to refine the IPSS, coordination of investigators and coalescence of MDS databases from multiple international institutions provided a much larger combined database of patients by the International Working Group for Prognosis in MDS (IWG-PM) project.

The aims of this study were to refine the IPSS by reassessing the prior major predictive features, determining the impact of the newer clinical features for prognostic power, incorporating larger and more differentiated cytogenetic subgroups, and reevaluating

Submitted March 28, 2012; accepted June 17, 2012. Prepublished online as *Blood* First Edition paper, June 27, 2012; DOI 10.1182/blood-2012-03-420489.

The online version of this article contains a data supplement.

Presented in preliminary form at the 11th International Symposium of MDS, Edinburgh, Scotland, May 19, 2011.⁵⁰

The publication costs of this article were defrayed in part by page charge payment. Therefore, and solely to indicate this fact, this article is hereby marked "advertisement" in accordance with 18 USC section 1734.

© 2012 by The American Society of Hematology

their prognostic impact. Statistically weighted clinical features were used to generate a prognostic categorization model. This larger combined database permitted better analyses of the specific impact of marrow blast percentage, depth of cytopenias, and of the less frequent features, particularly further evaluating the relatively rare cytogenetic subgroups. In addition, as some features had only been reported from single centers, this combined database extended such findings.

Methods

Under the aegis of the MDS Foundation, MDS databases of primary untreated MDS patients from multiple international institutions from 11 countries, including data from the Spanish, French, Piemonte (Italy) and Brazilian MDS Registries and that from the International MDS Risk Analysis Workshop (IMRAW), were submitted and evaluated by the IWG-PM project. Databases came from both university- and nonuniversity-based hospitals associated with the country's MDS-focused groups. Institutional review board approval was obtained from the respective institutions. After careful vetting for accuracy, a combined IWG-PM database of 7012 patients, classified morphologically by FAB ($n = 7000$) and, in most cases, by the WHO criteria ($n = 5504$),⁶ was created. Inclusion criteria were: primary MDS patients whose disease had not been treated with disease-altering therapy during their MDS phase (ie, no hypomethylating agents, intensive chemotherapy, or hematopoietic stem cell transplantation). Marrow blasts were required to be $\leq 30\%$, peripheral blood blasts $\leq 19\%$, white blood count (WBC) $\leq 12 \times 10^9/L$, and absolute neutrophil count (ANC) $\leq 8 \times 10^9/L$. The patient's blood counts needed to demonstrate ≥ 2 months of stable disease. Marrow blasts and cytogenetic results, hemoglobin, ANC, and platelet levels at diagnosis were documented, and data regarding patient's survival and development of acute myeloid leukemia (AML) were obtained. The patient ages were ≥ 16 years. Data regarding use of erythropoiesis-stimulating agents or myeloid growth factors were not systematically collected.

The results of cytogenetic analysis of bone marrow were reviewed by the Cytogenetics Committee (D.H., Chair; J.S., C.F., M.M.L.B., F.S., and M.L.S.) using standard ISCN criteria.²¹ Specific karyotypic abnormalities and their risk categories were used as per Schanz et al, which required ≥ 10 patients for inclusion as a specific abnormality. Parameters evaluated were cytogenetic risk category,⁸ marrow aspirate blast percent, depth of cytopenias, degree of marrow fibrosis (0-1+ vs 2-3+), Eastern Cooperative Oncology Group performance status, serum LDH (normal values defined by each hospital), ferritin and β_2 -microglobulin levels, RBC transfusion dependence, and patient age at diagnosis. The database of untreated primary MDS patients from the Medical University of Vienna was used as an external independent validation cohort.

Statistical methods

Modeling of prognostic risk was based on multivariate analysis of survival time and time to AML transformation. Functional relations of bone marrow blasts and cytopenias with prognostic risk were analyzed to define appropriate categories for score calculation.²² Robust Cox models²³ for survival, time to transformation, and combination of both were built to derive the relative weights within the score. To compensate for possible heterogeneities, analyses were stratified by data source, year of diagnosis, and age. This led to generation of reference scores for these clinical outcomes.

The score was developed following a hierarchical approach. The main score was built based on the initially elaborated categories for bone marrow blasts and cytopenias together with the cytogenetic risk categories.⁸ The categorizations of cytopenias were adjusted to clinically relevant cutpoints. To calculate a specific feature's added score, the proportional weight of the score was used. A "combined" score model was effectively used rather than having 2 separate models for survival and AML transformation. Separate specific score variants for survival and AML transformation were consid-

ered, but they provided very little gain. Therefore, for ease of communication and implementation, 1 unified model was preferred. This model approximated (statistically) both outcomes adequately, particularly for survival when age was included. Risk-scoring values were rounded to the nearest 0.5 unit with re-estimation of all statistics for the rounded scores. To ease interpretation, boundaries of the 5 risk categories of the final score were chosen to build a scale with approximately equal risk increments between 2 adjacent levels.

The effect of age was modeled as an optional additive feature for overall survival prediction by including age in a model with the already defined main scores. Additional potentially differentiating features were analyzed to estimate their incremental prognostic values, given the already defined main score.

As a measure of prognostic power, the Dxy coefficient for censored data²⁴ was used. Dxy is a concordance coefficient varying between -1 and 1 , with 0 representing no predictive power and 1 perfect concordance of ascribed risk and survival and time to transformation, respectively. For a potentially additive feature to be considered clinically significant, both a $P < .05$ and a gain in prognostic power (Dxy) were required. Dxy's were internally validated by bootstrapping the related Cox models.²⁴ Two-sided P values $< .05$ were reported as significant. Correlations between ordered categorical variables were measured by Kendall tau. In line with the nature of the project, no adjustment for multiple testing was applied. All analyses were performed using the open source software R Version 2.14.1.^{25,26} Kaplan-Meier curves were used to demonstrate clinical outcomes.

Results

Patient characteristics

Data from 7012 patients from multiple institutional databases in the combined IWG-PM database were evaluated. Their median age was 71 years, 77% were > 60 years, the male/female ratio 1.5:1, and median follow-up time 3.9 years. The 7012 patients obtained for evaluation were classified by FAB ($n = 7000$, 99.8%)⁷ and additionally by WHO ($n = 5504$, 78.5%)⁶ and/or WPSS ($n = 2325$, 33.2%).⁹ Table 1 shows the individual clinical variables and outcomes (survival, AML evolution) for our patient cohort, with Dxy concordance coefficients (indicating prognostic power) and univariate P values. Bootstrap-validated Dxy values were almost identical with the sample results given in Table 1 (all differences were at most .01, except the value for β_2 -microglobulin).

Identification of significant prognostic variables

As in the IPSS, marrow cytogenetic subset, marrow blast percentage, and cytopenias were considered as the basis of this new prognostic system (the Revised IPSS [IPSS-R]) given their statistical weight compared with the other variables analyzed herein using Cox proportional hazard regression analyses, with overall survival and AML transformation as outcomes. Multivariate analysis of these variables led to their relative statistical weighting, determining their impact on prognostic risk, using Cox proportional hazard regression. In descending order, these 5 major variables for evaluating clinical outcomes were: cytogenetic risk groups, marrow blast percentage, and depth of cytopenias (hemoglobin, platelet, and ANC levels, respectively). The novel components obtained in the current analysis included: 5 rather than 3 cytogenetic prognostic subgroups with specific classification of a number of less common cytogenetic subsets and alteration of others (Table 2)⁸; the $< 5\%$ marrow blast category was split between 0%-2% and > 2 - $< 5\%$, whereas all patients with $> 10\%$ blasts were grouped in the same category; depth of cytopenias at clinically and statistically relevant cutpoints rather

Table 1. Clinical variables of MDS patients

	No. of patients	% of patients	Survival years, median	Dxy (95% CI; P*)	No. of patients	% of patients	AML/25% y	Dxy (95% CI; P*)
Cytogenetics	7012	100		.25	6485	100		.27
Very good	255	4	5.4	(.23-.26)	255	3	NR	(.24-.31)
Good	5069	72	4.8		4657	72	9.4	
Intermediate	947	13	2.7		875	14	2.5	
Poor	283	4	1.5		276	4	1.7	
Very poor	458	7	0.7		452	7	0.7	
BM blasts	7012	100		.30	6485	100		.47
0-2%	3279	47	5.9	(.28-.32)	3004	46	NR	(.44-.50)
> 2- < 5%	1266	18	4.2		1172	18	8.5	
5-10%	1377	19	2.3		1263	20	2.2	
> 10%-30%	1090	16	1.3		1046	16	1.0	
> 10%-20%	(901)	(13)	(1.3)		(860)	(13)	(0.93)	
> 20%-30%	(189)	(3)	(1.4)		(186)	(3)	(1.0)	
Hemoglobin, g/dL	7012	100		.21	6485	100		.16
≥ 10	3377	48	5.5	(.19-.23)	3109	48	9.5	(.12-.19)
8- < 10	2464	35	2.9		2286	35	5.5	
< 8	1171	17	2.0		1090	17	2.4	
Platelets†	7012	100		.23	6485	100		.17
≥ 100	4195	60	5.1	(.21-.25)	3823	59	8.7	(.14-.21)
50- < 100	1469	21	2.8		1368	21	3.1	
< 50	1348	19	1.6		1294	20	3.1	
ANC†	7012	100		.11	6485	100		.16
≥ 0.8	5758	82	4.4	(.10-.13)	5303	82	9.2	(.13-.19)
< 0.8	1254	18	1.9		1182	18	1.9	
IPSS-R	7012	100		.43	6485	100		.52
Very low	1313	19	8.8	(.42-.45)	1212	19	NR	(.49-.55)
Low	2646	38	5.3		2395	37	10.8	
Intermediate	1433	20	3.0		1310	20	3.2	
High	898	13	1.6		857	13	1.4	
Very high	722	10	0.8		711	11	0.7	
Sex	7012	100		.07	6485	100		.04
Male	4243	61	3.3	(.05-.09)	3962	61	5.8	(.00-.07)
Female	2769	39	4.8		2523	39	8.0	(.030)
Age	7012	100		.05	6485	100		-.02
≤ 60 y	1582	23	5.7	(.03-.06)	1489	23	8.1	(-.05-.01)
> 60 y	5430	77	3.5		4996	77	6.1	(.082)
ECOG Performance Status	2496	36		.16	2489	38		.09
0	751	30	4.3	(.13-.18)	748	30	8.8	(.04-.15)
1	1477	59	2.2		1473	59	6.3	(.005)
2-4	268	11	1.6		268	11	3.5	
Serum ferritin	3049	43		.16	2747	42		.11
≤ 350 ng/mL	1602	53	6.3	(.13-.20)	1435	52	NR	(.05-.17)
> 350 ng/mL	1447	47	4.2		1312	48	14.5	(.004)
Serum LDH	4257	61		.12	4130	64		.12
Normal	3103	73	4.1	(.10-.14)	3007	73	9.2	(.08-.16)
High	1154	27	2.1		1123	27	3.2	
Serum β₂-microglobulin	1005	14		.14 (.10-.18)	1005	15		.02 (-.08-.11)
≤ 2 g/mL	263	26	3.8		263	26	6.7	(.498)
> 2 g/mL	742	74	1.7		742	74	4.6	
Marrow fibrosis	1323	19		.04	1183	18		.05
No	1158	88	5.2	(.01-.07)	1055	89	14.5	(-.01-.12)
Yes	165	12	3.2	(.004)	128	11	4.8	(.069)
RBC transfusion dependence	2933	42		.26	2645	41		.27
No	2003	68	6.9	(.23-.29)	1808	68	14.5	(.22-.32)
Yes	930	32	2.3		837	32	2.1	
IPSS	7008	100		.37	6481	100		.48
Low	2625	37	7.0	(.35-.39)	2394	37	NR	(.45-.51)
Intermediate-1	2778	40	3.6		2541	39	6.1	
Intermediate-2	1126	16	1.5		1074	17	1.2	
High	479	7	0.9		472	7	0.7	

AML/25% indicates time for 25% of patients to develop AML.

*All univariate P values not explicitly stated are $P < .001$.† $\times 10^9/L$.

Table 2. MDS Cytogenetic Scoring System

Prognostic subgroups, % of patients	Cytogenetic abnormalities	Median survival,* y	Median AML evolution, 25%,* y	Hazard ratios OS/AML*	Hazard ratios OS/AML†
Very good (4%/3%†)	–Y, del(11q)	5.4	NR	0.7/0.4	0.5/0.5
Good (72%/66%†)	Normal, del(5q), del(12p), del(20q), double including del(5q)	4.8	9.4	1/1	1/1
Intermediate (13%/19%†)	del(7q), +8, +19, i(17q), any other single or double independent clones	2.7	2.5	1.5/1.8	1.6/2.2
Poor (4%/5%†)	–7, inv(3)/t(3q)/del(3q), double including –7/del(7q), complex: 3 abnormalities	1.5	1.7	2.3/2.3	2.6/3.4
Very poor (7%/7%†)	Complex: > 3 abnormalities	0.7	0.7	3.8/3.6	4.2/4.9

OS indicates overall survival; and NR, not reached.

*Data from patients in this IWG-PM database, multivariate analysis (n = 7012).

†Data from Schanz et al⁸ (n = 2754).

than merely the number of these abnormalities; and modification of the ANC cutpoint to $0.8 \times 10^9/L$ from $1.8 \times 10^9/L$ in the IPSS.

Regarding the cytogenetic classification, good correlation was demonstrated regarding the proportional hazard ratios for clinical outcomes (survival and AML evolution) of the subgroups from the recently developed cytogenetic system⁸ on which we based our analysis and from our data (Table 2). Because of the higher number of patients analyzed in our database, more cytogenetic subtypes were analyzable for prognosis in our study than had been possible for the IPSS (15 vs 6). A double independent review of the cytogenetic data was performed by the IWG-PM Cytogenetic Committee. Differences between this categorization and that of the IPSS included the finding of complex karyotypes with > 3 abnormalities being distinct from those with 3 abnormalities and with poorer prognosis; chromosome 7 abnormalities were similarly prognostically separable from the Very poor category (when observed in karyotypes with ≤ 3 abnormalities; supplemental Figures 1 and 2, available on the *Blood* Web site; see the Supplemental Materials link at the top of the online article). The specific cytogenetic abnormalities that now were able to be placed into distinct prognostic subgroups included inv(3)/t(3q)/del(3q), del(11q), del(12p), i(17q), +19, double anomalies including del(5q), double abnormalities including del(7q) or monosomy 7, and any other double changes [in addition to the previously IPSS-denoted –Y, del(5q), del(20q), all as single abnormalities] (Table 2).

The distributions of the IPSS cytogenetic categories in the present IWG-PM database was similar to those in the IMRAW database, which generated the IPSS (1): IPSS Good/Intermediate/Poor 73%/15%/12% (IMRAW 70/14/16%). This contrasted with the cytogenetic categorization in the IPSS-R: Very good/Good/Intermediate/Poor/Very poor 4%/72%/13%/4/7%. The IPSS clinical subgroups in our patient cohort were: Low 37%, Intermediate-1 40%, Intermediate-2 16%, and High 7%. These groups were also similar to the IMRAW patients: 33%/38%/22%/7% (1). As both FAB and WHO morphologic classifications were used, refractory anemia with excess blasts in transformation 6%, chronic myelomonocytic leukemia 9%, and isolated del(5q) 4% were represented in our patients.

Model development

Analysis of the marrow blast cutpoints indicated that striking differences were evident for both survival and AML evolution for patients with blasts $0\text{--}\leq 2\%$ (lower risk) versus blasts $> 2\text{--}< 5\%$: Cox univariate pairwise comparison hazard ratio 1.4 (95% CI, 1.3-1.5, $P < .001$) for survival and 2.4 (95% CI, 1.9-2.9 $P < .001$) for AML evolution (Figures 1 and 2). Multivariate results confirmed this finding. Thus, we incorporated these distinct categorical values into the scoring model. Further, the statistical analysis of clinical

outcomes for blasts $> 10\text{--}\leq 20\%$ vs $> 20\text{--}\leq 30\%$ indicated that these values had similar risk: hazard ratio = 1.0 (95% CI, 0.8-1.2, $P = .996$) for survival and 0.8 (95% CI, 0.6-1.1 $P = .174$) for AML evolution (supplemental Figures 3 and 4). Thus, we combined these 2 categories in the scoring model. In addition, this finding of the statistical relevance of the specific blast cutpoints in the combined database was also present in the individual databases, including that of the IMRAW database from which the IPSS¹ had been derived. For the IMRAW patients, the hazard ratios for survival and AML evolution were substantially the same as those for the combined database for both the lower and higher blast group analyses.

Review of the data indicated that baseline depths of cytopenias were statistically and clinically important (Table 3). The relevant cutpoints were: hemoglobin values of < 8 , $8\text{--}< 10$, and ≥ 10 g/dL, platelets of < 50 , $50\text{--}100$ and $\geq 100 \times 10^9/L$, and ANC of < 0.8 versus $\geq 0.8 \times 10^9/L$.

The changes from the cutpoints used in the IPSS-R compared with those from the IPSS include (1) separating marrow blasts $< 5\%$ into $0\text{--}2\%$ and $> 2\text{--}< 5\%$; and (2) providing differing depths of cytopenias; also, as patients with marrow blasts of $10\text{--}20\%$ had similar outcomes as those with $21\text{--}30\%$; and (3)

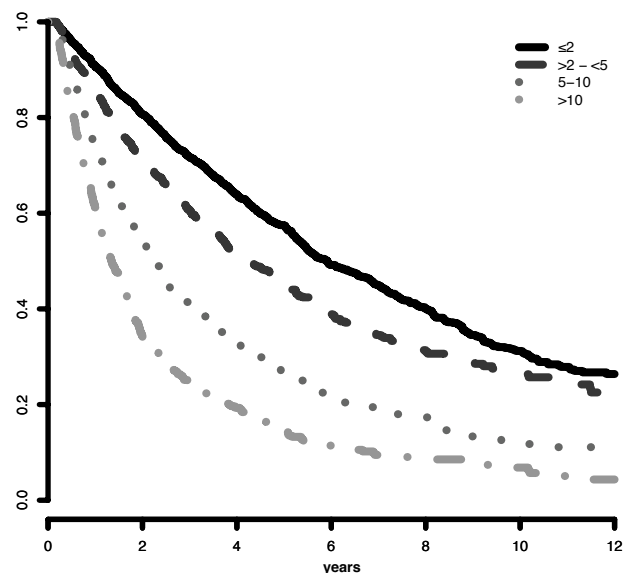


Figure 1. IWG-PM patients marrow blast subgroups. Impact on survival. Survival related to MDS patients' individual marrow blast percent categories (Kaplan-Meier curves, Dxy 0.3, $P < .001$). The number of patients in each category and their proportional representation are shown in Table 1.

Table 3. IPSS-R prognostic score values

Prognostic variable	0	0.5	1	1.5	2	3	4
Cytogenetics	Very good	—	Good	—	Intermediate	Poor	Very poor
BM blast, %	≤ 2	—	> 2% - < 5%	—	5%-10%	> 10%	—
Hemoglobin	≥ 10	—	8- < 10	< 8	—	—	—
Platelets	≥ 100	50- < 100	< 50	—	—	—	—
ANC	≥ 0.8	< 0.8	—	—	—	—	—

— indicates not applicable.

the category of marrow blasts > 10%-30% usefully described the statistical impact of this parameter compared with having separated these groups in the IPSS.

The IPSS-R prognostic risk categories were determined by combining the scores of these main 5 features (Table 4). The model permitted the definition of 5 well-separated prognostic categories for both survival and AML evolution in the IPSS-R (Very low, Low, Intermediate, High, Very high) rather than the 4 categories that are present in the IPSS (Tables 4 and 5; Figures 3 and 4). These risk categories describe scores for 70-year-old patients.

Survival duration and time to AML evolution for patients within these 5 prognostic categories are shown in Table 5 and Figures 3 and 4. As indicated in Table 5, in which hazard ratios are shown, ~ 56% of the patients were in the lower risk (Very low and Low) and ~ 23% were in the higher (High and Very high) risk prognostic subgroups for both of these clinical outcomes. For both survival and time to AML evolution, the individual centers' Dxy's were in good agreement with that for the total patient cohort.

Ready extrapolation is available to adjust the score for patients of any age by use of the following formula: $(\text{years} - 70) \times [0.05 - (\text{IPSS-R risk score} \times 0.005)]$, add the result to the sum of the 5 major variables. Patient age clearly had major impact on survival (ie, decreased survival with aging), but not for AML evolution (Figure 5; supplemental Figure 5). Table 6 provides specific survival data within each risk category for patients of differing ages. Figure 6 provides a nomogram, based on

the just noted formula, which visually describes the method to determine predicted survival based on patient's age and risk status, generating age-adjusted IPSS-R categorization (IPSS-RA).

Additional significant differentiating features for predicting survival were found, although their impact on prognostic score was relatively low compared with the 5 major features and age. These were: performance status, serum ferritin, LDH, and possibly β_2 -microglobulin (supplemental Table 1). For determining the contribution of each of these features to the patient's risk category, the numerical values (with the categorized values for each variable) are indicated in the table and should be added to the raw scores of the major variables. This table provides multivariate *P* values as well as indicating the incremental contribution of a feature to the already defined score. Of note, none of these variables was a statistically significant additive feature for predicting AML evolution.

As shown in Table 7, differences were noted in the proportion of our patient cohort who died with or without developing AML in relation to their initial prognostic risk category. Of the patients who died, if observed until death, the proportions dying with leukemia in the groups were 13%-33%, positively related to their higher-risk categories.

Distinction between IPSS-R and IPSS

A summary of the refinements of the IPSS-R beyond the IPSS is shown in Table 8. The IPSS-R model showed effective separation of the IPSS patient risk categories and more effectively discriminated prognostic risk for these patients than the IPSS, as indicated by the higher Dxy values (.43 vs .37 for survival, .52 vs .48 for AML evolution; Table 1). Data indicated that 99% of the patients in the IPSS-R Very low and Low risk subgroups encompassed those who had been classified as IPSS Low and Intermediate-1; 81% of those in the IPSS-R High and Very high risk subgroups had been classified as IPSS Intermediate-2 and High (Figure 7, Kendall tau = 0.73). The IPSS-R Intermediate category (20% of the patients) was composed of 73% IPSS Intermediate-1, 19% Intermediate-2, 7% Low, 1% High (Table 9). In the IPSS lower risk group (Low/Intermediate-1), 27% of these patients were shifted into higher risk IPSS-R categories (mainly Intermediate). At the other prognostic extreme, 18% of the IPSS higher-risk (Intermediate-2/High) were downstaged into lower-risk IPSS-R categories (predominantly IPSS-R Intermediate).

Table 4. IPSS-R prognostic risk categories/scores

Risk category	Risk score
Very low	≤ 1.5
Low	> 1.5-3
Intermediate	> 3-4.5
High	> 4.5-6
Very high	> 6

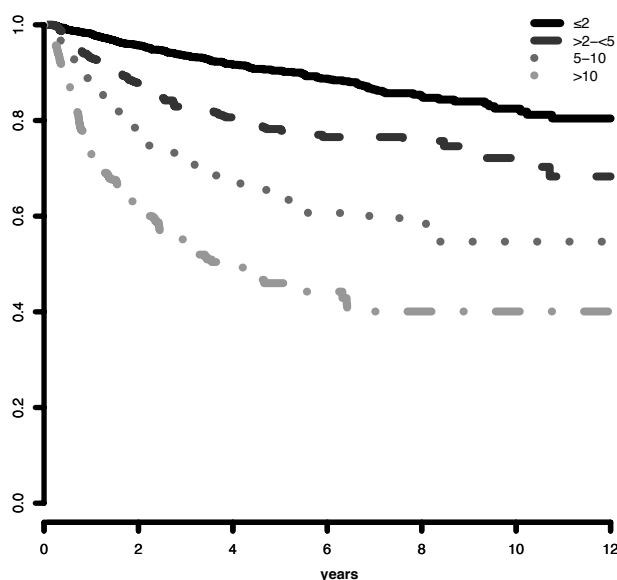


Figure 2. IWG-PM patients marrow blast subgroups: Impact on AML evolution. Progression to AML related to MDS patients' individual marrow blast percent categories (Kaplan-Meier curves, Dxy 0.47, *P* < .001). The number of patients in each category and their proportional representation are shown in Table 1.

Table 5. IPSS-R prognostic risk category clinical outcomes

	No. of patients	Very low	Low	Intermediate	High	Very high
Patients, %	7012	19	38	20	13	10
Survival, all*		8.8 (7.8-9.9)	5.3 (5.1-5.7)	3.0 (2.7-3.3)	1.6 (1.5-1.7)	0.8 (0.7-0.8)
Hazard ratio (95% CI)		0.5 (0.46-0.59)	1.0 (0.93-1.1)	2.0 (1.8-2.1)	3.2 (2.9-3.5)	8.0 (7.2-8.8)
Patients, %	6485	19	37	20	13	11
AML/25%*†		NR (14.5-NR)	10.8 (9.2-NR)	3.2 (2.8-4.4)	1.4 (1.1-1.7)	0.73 (0.7-0.9)
Hazard ratio (95% CI)		0.5 (0.4-0.6)	1.0 (0.9-1.2)	3.0 (2.7-3.5)	6.2 (5.4-7.2)	12.7 (10.6-15.2)

NR indicates not reached.

*Medians, years (95% CI), $P < .001$.†Median time to 25% AML evolution (95% CIs), $P < .001$.

Model validation

After construction and acceptance of the IPSS-R within the IWG-PM, an external validation cohort of 200 MDS patients from the Medical University of Vienna was evaluated and demonstrated good comparability of demographic features with the global IWG-PM database (supplemental Table 2). Their median age was 71 years, 83% were > 60 years, and the male/female ratio was 1.2:1 with a median follow-up time of 4.6 years. A similar proportion of these patients composed the cytogenetic, clinical, and IPSS-R subgroups, as did the global IWG-PM cohort (supplemental Table 2). Our IPSS-R multivariate model fit these data well, exhibiting high prognostic power, as indicated by the high Dxy's and the clearly differing temporal medians and hazard ratios between prognostic risk categories for both survival and AML evolution (Table 10, supplemental Table 2), including age-related survival (supplemental Table 3). Cox model analyses also supported the improved prognostic ability compared with the IPSS.

Discussion

We herein describe the IPSS-R, which provides useful advances and more discriminatory prognostic risk assessment beyond the IPSS for assessing clinical outcomes in MDS (Table 8). Although the IPSS has been an important standard for assessing prognosis of primary untreated adult MDS patients over the past decade, additional refinements²⁷ and prognostic variables have been suggested as providing meaningful differences for patient clinical outcomes.^{2-5,9-20} In addition, cytogenetic subgroups have recently been defined as providing improved prognostic evaluation of clinical outcomes of primary MDS patients.⁸ A number of prior prognostic systems in addition to the IPSS have demonstrated merit, although the relative value of each variable was unclear. Thus, in this collaborative IWG-PM project, with the large number of patients evaluated from multiple coalesced databases ($n = 7012$), we have integrated the various recently independently defined

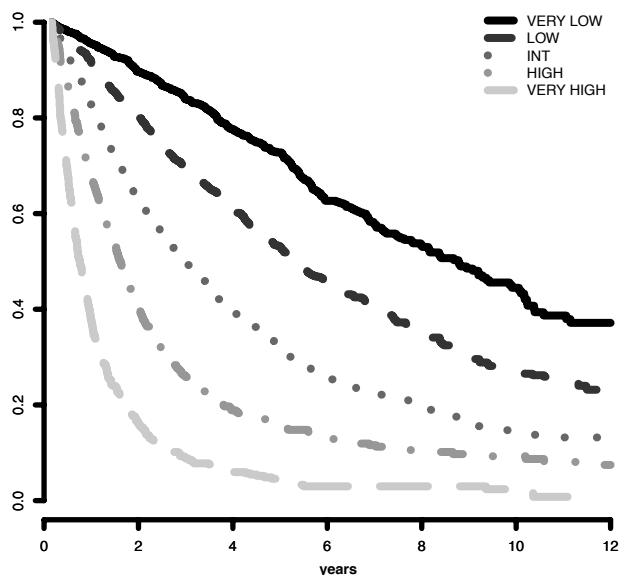


Figure 3. Survival based on IPSS-R prognostic risk-based categories. Survival related to MDS patients' prognostic risk categories (Kaplan-Meier curves, $n = 7012$; Dxy 0.43, $P < .001$). The number of patients in each category and their proportional representation are shown in Table 1.

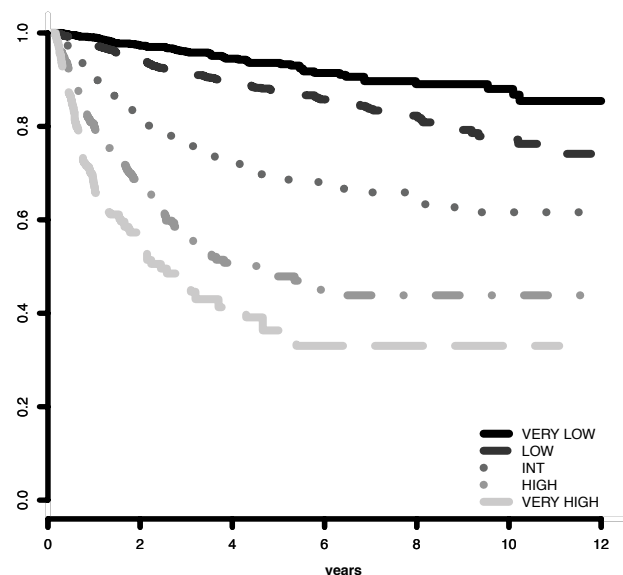


Figure 4. AML evolution based on IPSS-R prognostic risk-based categories. Progression to AML related to MDS patients' prognostic risk categories (Kaplan-Meier curves, $n = 6485$; Dxy 0.52, $P < .001$). The number of patients in each category and their proportional representation are shown in Table 1.

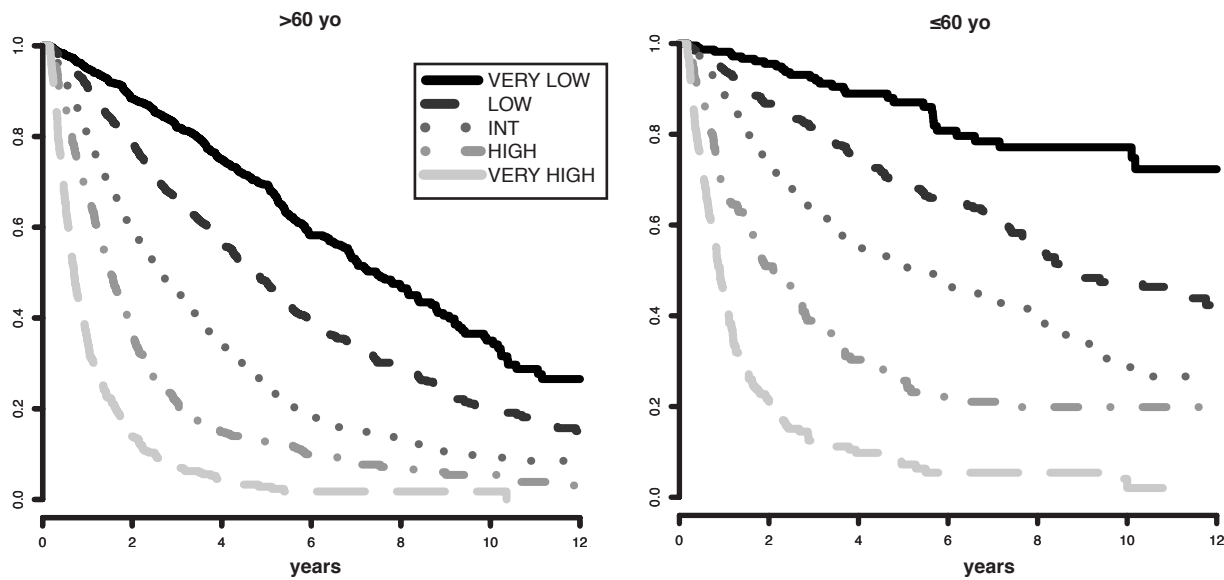


Figure 5. Survival based on patient ages > 60 years vs ≤ 60 years related to their IPSS-R prognostic risk-based categories (Kaplan-Meier curves). Age-related differential survivals are shown for patients in all groups, particularly for those in lower risk categories.

clinical factors for MDS in a comprehensive method and assessed their relative prognostic impact. Multivariate analyses demonstrated that the same major features present in the IPSS (cytogenetic subgroups, marrow blast percentage, and cytopenias) retained major prognostic impact in IPSS-R (in descending order of statistical weight). However, more precise prognostication of these clinical outcomes (survival and AML evolution) in the IPSS-R was demonstrated by effective refinement of these features within the IPSS-R (depth of cytopenias, splitting of marrow blasts $< 5\%$, and more precise cytogenetic subgroups). The IPSS-R also demonstrated improved predictive prognostic power with more precise prognostic categories⁵ versus 4 groups in the IPSS. In particular, a substantial proportion of those patients previously placed within the IPSS Intermediate-1 and -2 categories were more precisely separated into all 5 IPSS-R categories.

Analogous to the IPSS, based on our clinical outcome data, lower-risk patients are composed within the IPSS-R Very low and Low categories; higher-risk patients are composed within the High and Very high categories. However, as shown in Table 9, the

IPSS-R has permitted improved refinement of risk categories for the IPSS Intermediate-1 and Intermediate-2 patients because a substantial portion of the patients who would have been categorized as IPSS Intermediate-1 are now in the IPSS-R Low category; a substantial portion of the patients who would have been categorized as IPSS Intermediate-2 are now in the IPSS-R High category. In other words, the “better risk” IPSS Intermediate-1 patients have been categorized into the lower-risk IPSS-R category; the “poorer risk” IPSS Intermediate-2 patients are now in the higher-risk IPSS-R category. Remaining within the IPSS-R Intermediate category are those who, indeed, have “intermediate” risk (Tables 5 and 7). On review, the clinical outcome data indicate that the IPSS-R Intermediate category appears closer to the initial IMRAW IPSS Intermediate-1 group (survival 3.0 years for IPSS-R Intermediate vs 3.5 years for IPSS Intermediate-1) than it is to IPSS Intermediate-2¹; the proximity of AML evolution for the IPSS-R Intermediate category is also closer to Intermediate-1 than to Intermediate-2 (ie, the “lower risk” patient group). However, per Table 7, the proportion of patients dying with leukemia for the

Table 6. IPSS-R survival related to age

Ages, y	IPSS-R prognostic risk categories				
	Very low	Low	Intermediate	High	Very high
All	8.8	5.3	3.0	1.6	0.8
≤ 60	NR	8.8	5.2	2.1	0.9
	(13.0-NR)	(8.1-12.1)	(4.0-7.7)	(1.7-2.8)	(0.8-1.0)
$> 60-70$	10.2	6.1	3.3	1.6	0.8
	(9.1-NR)	(5.3-7.4)	(2.5-4.0)	(1.5-2.0)	(0.7-1.0)
$> 70-80$	7.0	4.7	2.7	1.5	0.7
	(5.9-9.0)	(4.3-5.3)	(2.4-3.1)	(1.3-1.7)	(0.6-0.8)
> 80	5.2	3.2	1.8	1.5	0.7
	(4.2-5.9)	(2.8-3.8)	(1.6-2.6)	(1.2-1.7)	(0.5-0.8)
≤ 60 (median, 52)	NR	8.8	5.2	2.1	0.9
> 60 (median, 74)	7.5	4.7	2.6	1.5	0.7
≤ 70 (median, 62)	13.3	7.7	3.9	1.7	0.9
> 70 (median, 77)	5.9	4.2	2.5	1.4	0.7

Data are median (95% CI).
NR indicates not reached.

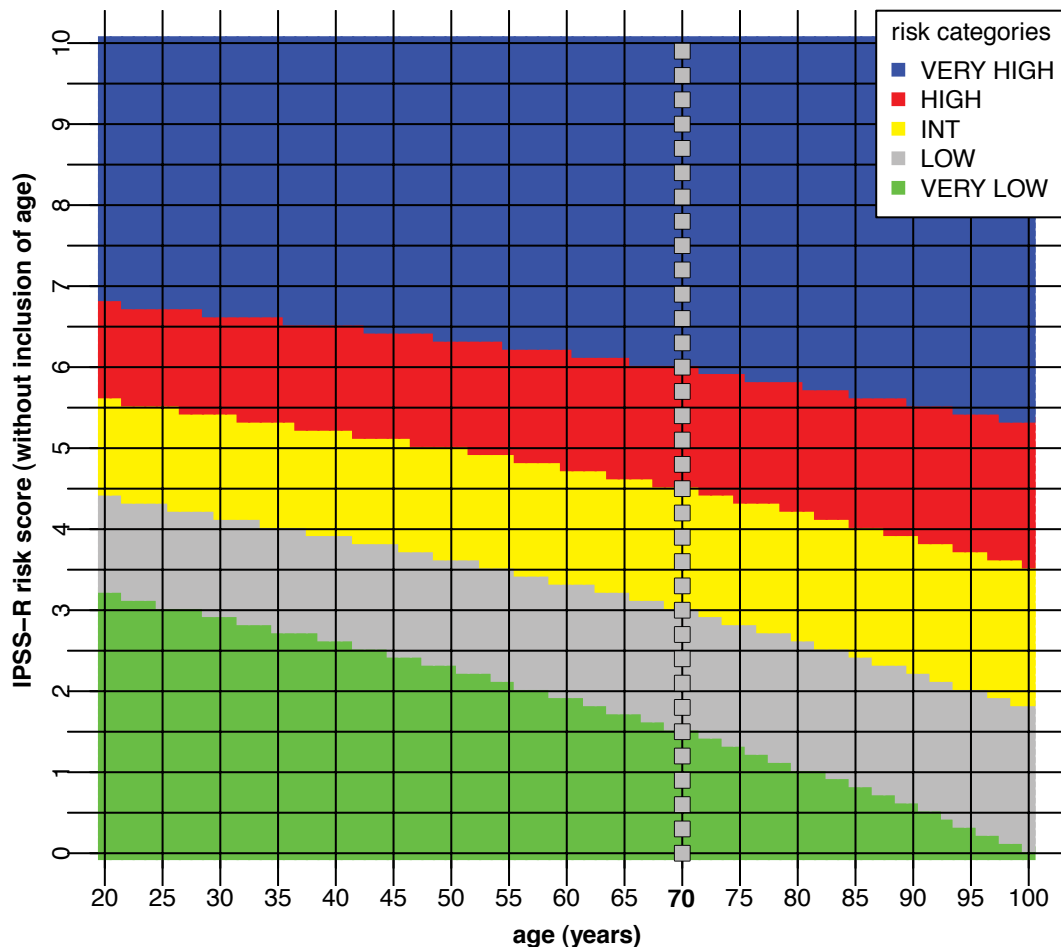


Figure 6. Age-adjusted IPSS-R risk categories. The nomogram describes predicted survival based on patient age and IPSS-R risk status (IPSS-RA). To determine an age-adjusted risk categorization, for example, follow the horizontal line, starting at the IPSS-R risk score 3.5 on the vertical axis (Int [Intermediate] risk category per Table 4) to the age of the patient and record the color at that point. If the patient is 45 years, the 3.5'-line and the vertical 45-year line cross in the gray field, placing the patient in the Low risk category, whereas if the patient is 95 years the 3.5'-line and the 95-year line cross in the yellow field, placing the patient in the Intermediate risk category. As indicated, for most patients in the Very high risk category there is no change of risk group, whereas for most patients in the lower risk categories there is greater possibility of category change. Note the "dotted" vertical line at 70 years, which is at the median age of the IWG-PM patient cohort from which the basic risk category scores were calculated (ie, without need for age correction for these patients). The formula to generate the age-adjusted risk score in the figure: $(\text{years} - 70) \times [0.05 - (\text{IPSS-R risk score} \times 0.005)]$. Example: For the 45-year-old patient with an IPSS-R risk score of 3.5 (Intermediate risk): $(45-70) \times [0.05 - (3.5 \times 0.005)] = -0.81$. Thus, $3.5-0.8 = 2.7$ [age-adjusted IPSS-R score, IPSS-RA: Low risk].

IPSS-R Intermediate category is distinctively worse than for the lower-risk categories. As survival is the major endpoint for most MDS clinical trials, and of predominant concern to patients and caregivers, it seems reasonable to suggest placement of IPSS-R Intermediate patients into the lower-risk group regarding their potential therapeutic management. However, given the distinctiveness of this patient category, assessment of these patients within both lower- and higher-risk treatment protocols appears warranted. Clinical trial evaluation and recommendations by practice guide-

lines committees will be needed to substantiate this point. Use of the additional differentiating features (eg, age, performance status, ferritin, LDH; see below) could be of particular value for categorization of these patients.

A major component of this schema was the provision of 5 cytogenetic subgroups (vs 3 in the IPSS) based on an increased number of specific prognostic chromosomal categories¹⁵ versus 6 in the IPSS. This increase in defined cytogenetic categories, with their increased prognostic weight, was the result of a larger number

Table 7. Mortality of MDS patients with or without AML evolution

Risk category	No. (%) of patients	Patients who		
		Died, no. (%)	Died with AML, no. (%)	Died without AML, no. (%)
Very low	1313	350 (27)	46 (13)	304 (87)
Low	2646	1053 (40)	174 (17)	861 (83)
Intermediate	1433	782 (55)	205 (26)	568 (74)
High	898	633 (71)	207 (33)	421 (67)
Very high	722	619 (86)	193 (31)	422 (69)
Total	7012	3437 (49)	825 (24)	2576 (76)

Table 8. Refinements of the IPSS-R beyond the IPSS

1. New marrow blast categories ≤ 2%, > 2%-< 5%, 5%-10%, > 10%-30%
2. Refined cytogenetic abnormalities and risk groups 16 (vs 6) specific abnormalities, 5 (vs 3) subgroups
3. Evaluation of depth of cytopenias Clinically and statistically relevant cutpoints used
4. Inclusion of differentiating features* Age, Performance Status, serum ferritin, LDH; β ₂ -microglobulin†
5. Prognostic model with 5 (vs 4) risk categories Improved predictive power

*For survival.
†Provisional.

of patients available for analysis of some of the relatively rare cytogenetic categories. This increased number of cases permitted specific characterization of many of the cytogenetic subgroups that had previously been labeled in the IPSS as “other” and also separated the prior Good and Poor groups into Very good and Good and Poor and Very poor, respectively, thus improving their prognostic accuracy.

Splitting patients with marrow blasts < 5% into those with 0%-2% and > 2-< 5% provided groups with very low risk versus low risk features. The issue of splitting this “low blast group” into 2 separate subgroups may present a challenge for reporting these values in some routine clinical laboratories. However, these differences in blast enumeration were reproducible within the

Table 9. Distribution (%) of IWG-PM patients who would previously have been categorized by IPSS now categorized by IPSS-R

IPSS	Very low	Low	Intermediate	High	Very High
Low (37)	44	52	4	0	0
Intermediate-1 (40)	6	45	38	10	1
Intermediate-2 (16)	0	1	24	45	30
High (7)	0	0	3	19	78
Total	19	38	20	13	10

% indicated within rows. Kendall tau = 0.73.

various databases from the different institutions in our study. The discriminatory lower blast percentages should be of particular importance in helping to ensure balanced representation of patients in clinical trials.

The presence of 10%-20% marrow blasts had similar impact on clinical outcomes as did 21%-30% blasts. Thus, these 2 categories were combined in the prognostic model. The underlying reason(s) for this finding is unclear but could relate to the stringent entry criteria for our patient cohort (eg, excluding treated patients and those with high circulating blasts or patients’ innate biologic similarity). Of interest, this similarity of clinical outcomes for patients within both the low marrow blast group and the 10%-30% blast group was also demonstrated in the IMRAW database from which the initial IPSS was generated.

Scoring the depth of cytopenias by subdivision at clinically and statistically relevant cutpoints rather than solely counting their

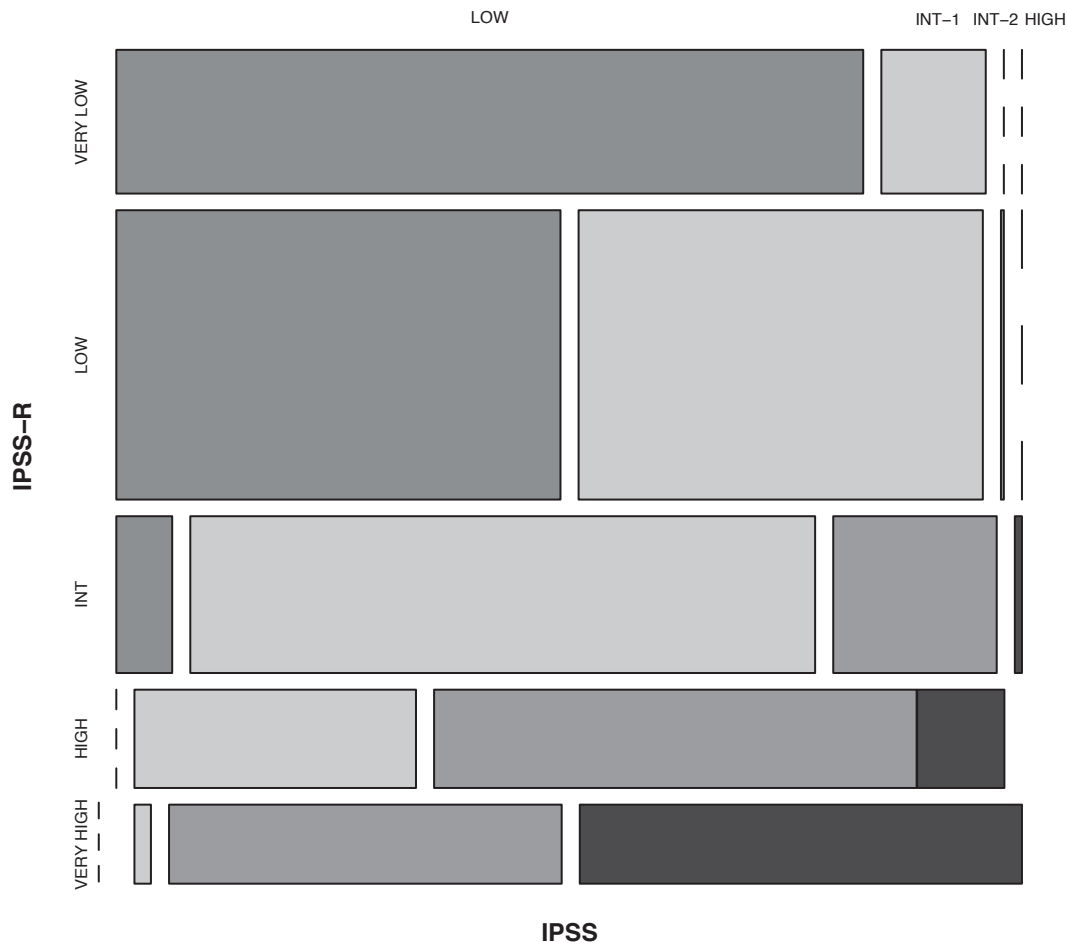


Figure 7. Comparison of IPSS-R and IPSS subgroups within the IWG-PM database patient cohort. Vertical axis represents IPSS-R categories’ and horizontal axis, IPSS categories. The proportion of patients in each category is shown in Table 9. Kendall $\tau = 0.73$.

Table 10. IPSS-R prognostic risk category: clinical outcomes of Medical University of Vienna patients (n = 200)

	Very low	Low	Intermediate	High	Very high
Patients, %	21	38	18	14	8
Survival					
All*	9.3	6.3	3.4	1.2	0.6
Hazard ratio	0.8	1	2.1	4.3	9.4
95% CI	0.4-1.5	0.7-1.5	1.3-3.5	2.4-7.7	4.3-20.8
AML transformation					
AML/25%*†	NR	NR	2.4	0.8	0.6
Hazard ratio	0	1	8.0	18.7	52.2
95% CI	0-∞	0.3-3.9	3.1-20.5	7.0-49.7	13.8-198.2

NR indicates not reached.

*Medians, years (95% CI; $P < .001$).†Median time to 25% AML evolution (95% CI; $P < .001$).

presence was demonstrated as being useful. The degree of anemia is an important correlate of poor clinical outcomes in MDS²⁷ and appears to be a good surrogate for RBC transfusion dependence.²⁸ In this regard, low hemoglobin levels have recently replaced RBC transfusion dependence as a prognostic parameter of the WPSS.²⁸ Underlying this finding, chronic anemia may contribute to the high nonleukemic mortality related to cardiac disease in MDS patients.^{2,3,28}

The other cytopenia cutpoints also have clinical relevance. The ANC of $0.8 \times 10^9/L$ (in IPSS-R) is associated with higher potential infectious risk rather than that of $1.8 \times 10^9/L$ (in the IPSS).^{29,30} Severe thrombocytopenia has been associated with increased morbidity and poor survival in MDS patients.^{29,31-33}

The impact of age was a major prognostic parameter for overall survival, although not for AML evolution. This effect has previously been shown with the IPSS and in other studies.^{1,29,34-36} In the IPSS-R prognostic model, the data are shown for age 70 years (the near median age of our patient cohort). However, to incorporate the model for different patient ages (IPSS-RA), we provide a formula (in "Results"), which permits statistical adjustment of survival prognosis for patients of all ages. This formula and the Figure 6 nomogram for calculating the impact of age for modifying the risk score/category provide resources for clinicians and for trial design and analysis. These age-related survival data are also shown in Table 6, Figures 5 and 6, and supplemental Figure 5. Our approach herein for providing age as an important, although optional, feature to assess predicted survival permits this variable to be used if total mortality risk is the aim but to not be used if solely disease-related risk is the objective. Age as a variable has some prognostic influence in all risk groups, but with more impact in lower than in higher-risk patients.

Additional differentiating features in the IPSS-R were additive to the 5 major parameters for predicting survival, albeit not for AML evolution: performance status, serum ferritin, and LDH levels. Serum LDH,⁹⁻¹¹ ferritin,¹² and β_2 -microglobulin^{13,14} have previously been shown to have prognostic importance for survival in MDS. Thus, our analyses have helped determine that these clinical features, of the many previously reported, were also reproducible in our large patient cohort after multivariate analysis. Relevant is that, although these features had some additive impact on survival (often moving patients either into a higher or lower risk category based on dichotomized values), this effect was relatively minor for determining prognostic risk categories compared with that of the 5 major features (see gains in Dxy's and score points shown in supplemental Table 1, which would be added to the basic IPSS-R prognostic score values seen in Table 3). None of these

features had additive prognostic impact on the potential for AML transformation.

Our data indicated the importance of performance status as contributing to prognosis for survival in MDS. Other studies have demonstrated the impact of comorbidities on survival in MDS,^{5,18-20,37-39} which may in part be reflected by performance status.

The negative impact of elevated serum ferritin levels for survival in our patients may relate to prior RBC transfusions contributing to iron overload and its complications or may reflect the severity of the anemia and degree of ineffective erythropoiesis because of the patients' poorer innate marrow function.^{2,12,40} In addition, as serum ferritin is an inflammatory marker and this value was obtained early in our patients' disease courses (ie, before high RBC transfusion burden), this abnormality may reflect the effects of inflammatory cytokines in MDS.^{41,42}

Although high serum β_2 -microglobulin levels had significant negative impact on survival in our patients, as this feature was essentially reported from only one institution in our cohort, we have included this as a provisional predictive parameter. In addition, renal dysfunction alters these levels and could confound these results.

Marrow fibrosis did not show incremental prognostic value for clinical outcomes in our study despite previous reports demonstrating poor prognosis of this morphologic feature.¹⁵⁻¹⁷ The absence of this variable as an additive factor could relate to the low number of patients assessed for this feature (19%) as well as the variable ways the degree of fibrosis was reported from the different institutions in our study.

Comparison of the IPSS-R with the IPSS categorizations of our IWG-PM patients indicated that a substantial proportion of patients within the IPSS lower-risk group (27%) would be "upstaged" with the IPSS-R categorization, and 18% in the higher risk group would be "downstaged" by IPSS-R. Such findings have implications for more precisely evaluating patient prognosis and their potential management.

Our data showed that the risk of dying related to leukemic evolution, for our patients observed until death, was increased in those with more advanced prognostic risk categories, Table 7). Thus, mortality from complications of bone marrow failure (without leukemic evolution) and patient comorbidities plays a major role in the clinical outcome of the lower-risk patients in contrast to the more prominent role of leukemic evolution in the higher-risk patients. The proportion of patients dying is lower in our patient cohort compared with the patient group within the original IMRAW patient sample,¹ predominantly because of a lower proportion of our patients dying after AML transformation. This was probably related to the more stringent entry criteria used in our current patient cohort.

Regarding the stringent inclusion criteria in our study, to be more precise with the diagnostic entity of MDS, and as recommended by National Comprehensive Cancer Network practice guidelines for MDS, relative stability of peripheral blood counts for 1-2 months was required to exclude other possible etiologies for their cytopenias, such as drugs, other diseases, or incipient evolution to AML.⁴³ Exclusion of these patients had minimal influence on the estimates of survival and time to AML evolution (data not shown). In addition, we excluded patients with secondary MDS as their clinical and biologic features (higher degree of AML progression, decreased survival and differing distribution, incidence and types of aberrant and poor risk cytogenetics) distinctively differ from those of primary MDS patients.⁴⁴

An external validation cohort of untreated primary MDS patients from the Medical University of Vienna was evaluated and demonstrated that the IPSS-R model also fit these data well. In particular, the validity of the model for this cohort was indicated by the high prognostic power (ie, Dxy's) and clearly differing temporal medians and hazard ratios between prognostic risk categories for both survival and AML evolution, including age-related survival. Further validation of the IPSS-R in other patient cohorts is warranted.

Some of the patients in the IWG-PM project were also assessed by the WPSS parameters.^{2,3} However, because of the relatively low proportion of our patients having several of this system's parameters reported (cellular dysplasia, RBC transfusions), these clinical variables were not included in our analysis. Modification and refinement of the WPSS (WPSS-R) based on the additional features present in the IWG-PM database will be the subject of a separate publication.

In conclusion, the IPSS-R retained continuity with the IPSS and was shown to possess improved prognostic ability for survival and AML evolution compared with the IPSS along with determining additional predictive features, particularly age, having significant impact on survival in primary untreated MDS patients. As such, the IPSS-R should prove beneficial for determination of prognostic status of untreated patients with this disease and aid design and analysis of clinical trials for this disease. Given recent molecular⁴⁵⁻⁴⁷ and flow cytometric studies^{48,49} showing prognostic value in MDS, further investigations to determine the impact of these technologies on the IPSS-R are warranted and ongoing.

Acknowledgments

The authors thank the staff of the MDS Foundation Inc, for logistical support; Ms Tracey Iraca for helpful logistical assistance for the IWG-PM project; Sherry Pierce, Canan Alhan, Norene Keenan, Ann Hyslop, Michael Groves, Rosa Sapena, Fatiha Chermat, Friedrich Wimazal, and Susanne Herndlhofer for aid in preparing institutional databases; and Barbara Hildebrandt for aid in performing cytogenetic analyses.

References

- Greenberg P, Cox C, LeBeau MM, et al. International scoring system for evaluating prognosis in myelodysplastic syndromes. *Blood*. 1997;89(6):2079-2088.
- Malcovati L, Porta M, Pascutto C, et al. Prognostic factors and life expectancy in myelodysplastic syndromes classified according to WHO criteria, a basis for clinical decision making. *J Clin Oncol*. 2005;23(30):7594-7603.
- Malcovati L, Germing U, Kuendgen A, et al. Time-dependent prognostic scoring system for predicting survival and leukemic evolution in myelodysplastic syndromes. *J Clin Oncol*. 2007;25(23):3503-3510.
- Kantarjian H, O'Brien S, Ravandi F, et al. Proposal for a new risk model in myelodysplastic syndrome that accounts for events not considered in the original International Prognostic Scoring System. *Cancer*. 2008;113(6):1351-1361.
- Della Porta MG, Luca Malcovati L, Strupp C, et al. Risk stratification based on both disease status and extra-hematologic comorbidities in patients with myelodysplastic syndrome. *Haematologica*. 2011;96(3):441-449.
- Vardiman JW, Thiele J, Arber DA, et al. The 2008 revision of the WHO classification of myeloid neoplasms and acute leukemia, rationale and important changes. *Blood*. 2009;114(5):937-951.
- Bennett JM, Catovsky D, Daniel MT, et al. Proposals for the classification of the myelodysplastic syndromes. *Br J Haematol*. 1982;51(2):189-199.
- Schanz J, Tüchler H, Solé F, et al. New comprehensive cytogenetic scoring system for primary myelodysplastic syndromes and oligoblastic AML following MDS derived from an international database merge. *J Clin Oncol*. 2012;30(8):820-829.
- Wimazal F, Sperr WR, Kundi M, et al. Prognostic value of lactate dehydrogenase activity in myelodysplastic syndromes. *Leuk Res*. 2001;25(4):287-294.
- Germing U, Hildebrandt B, Pfeilstocker M, et al. Refinement of the international prognostic scoring system (IPSS) by including LDH as an additional prognostic variable to improve risk assessment in patients with primary myelodysplastic syndromes. *Leukemia*. 2005;19(12):2223-2231.
- Wimazal F, Sperr WR, Kundi M, et al. Prognostic significance of serial determinations of lactate dehydrogenase (LDH) in the follow-up of patients with myelodysplastic syndromes. *Ann Oncol*. 2008;19(5):970-976.
- Sanz G, Nomdedeu B, Such E, et al. Independent impact of iron overload and transfusion dependency on survival and leukemic evolution in patients with myelodysplastic syndrome [abstract]. *Blood*. 2008;112(11). Abstract 640.
- Gatto S, Ball G, Onida F, et al. Contribution of beta-2 microglobulin levels to the prognostic stratification of survival in patients with myelodysplastic syndrome (MDS). *Blood*. 2003;102(5):1622-1625.
- Neumann F, Gattermann N, Barthelmes HU, et al. Levels of beta 2 microglobulin have a prognostic relevance for patients with myelodysplastic syndrome with regard to survival and the risk of transformation into acute myelogenous leukemia. *Leuk Res*. 2009;33(2):232-236.
- Verburgh E, Achten R, Maes B, et al. Additional prognostic value of bone marrow histology in patients subclassified according to the International Prognostic Scoring System for myelodysplastic syndromes. *J Clin Oncol*. 2003;21(2):273-282.
- Buesche G, Teoman H, Wilczak W, et al. Marrow fibrosis predicts early fatal marrow failure in patients with myelodysplastic syndromes. *Leukemia*. 2008;22(2):313-322.

Investigators and institutions providing data from the Spanish, French, Piemonte (Italy), and Brazilian MDS Registries are listed in supplemental Table 4.

This work was supported by Celgene Inc and Amgen Inc (unrestricted grants), the Tayside Leukemia Research Endowment Fund for enabling the Tayside Registry (S.T.), Associazione Italiana per la Ricerca sul Cancro (grant 1005) "Special Program Molecular Clinical Oncology 5 × 1000," and Fondazione Cariplo, Milan, Italy (L.M. and M.C.).

The URLs for a Web-based calculator tool to the IPSS-R are located at <http://www.ipss-r.com> and at <http://www.mds-foundation.org/calculator/index.php>.

Authorship

Contribution: P.L.G. designed, performed, and coordinated the research, collected, contributed, analyzed and interpreted the data, and wrote the manuscript; H.T. designed and performed the research, performed the statistical analyses, produced the figures, and edited the manuscript; J.S. collected and contributed data, performed the research, and analyzed and interpreted the data; G.S., G.G.-M., F.S., D.B., P.F., A.L., J.C., O.K., M.L., J.M., S.M.M.M., Y.M., M.P., M.S., W.R.S., R.S., S.T., P.V., T.V., A.A.v.d.L., and U.G. collected and contributed data, analyzed the results and critically revised the paper; J.M.B. collected, contributed, analyzed, and interpreted the data and critically revised the paper; C.F., M.M.L.B., and M.L.S. analyzed and interpreted the data and critically revised the paper; F.D., H.K., A.K., L.M., and M.C. collected and contributed data and reviewed the manuscript; the Cytogenetics Committee members reviewed the cytogenetics data and formulations; and D.H. collected, contributed, analyzed, and interpreted data, designed and performed the research, and edited the manuscript.

Conflict-of-interest disclosure: The authors declare no competing financial interests.

Correspondence: Peter L. Greenberg, Hematology Division, Stanford University Cancer Center, 875 Blake Wilbur Dr, Rm 2335, Stanford, CA 94305-5821; e-mail: peterg@stanford.edu.

17. Della Porta MG, Malcovati L, Boveri E, et al. Clinical relevance of bone marrow fibrosis and CD34-positive cell clusters in primary myelodysplastic syndromes. *J Clin Oncol*. 2009;27(5):754-762.
18. Wang R, Gross CP, Halene S, Ma X. Comorbidities and survival in a large cohort of patients with newly diagnosed myelodysplastic syndromes. *Leuk Res*. 2009;33(12):1594-1598.
19. Naqvi K, Garcia-Manero G, Sardesai S, et al. Association of comorbidities with overall survival in myelodysplastic syndrome: development of a prognostic model. *J Clin Oncol*. 2011;29(16):2240-2246.
20. Pfeilstöcker M, Tüchler H, Schönmetzler A, et al. Time changes in predictive power of established and recently proposed clinical, cytogenetic and comorbidity scores for myelodysplastic syndromes. *Leuk Res*. 2012;36(2):132-139.
21. Shaffer LG, Slovak ML, Campbell LJ, eds. *An International System for Human Cytogenetic Nomenclature: Recommendations of the International Standing Committee on Human Cytogenetic Nomenclature*. Basel, Switzerland: Karger; 2009.
22. Grambsch PM, Therneau TM, Fleming TR. Diagnostic plots to reveal functional form for covariates in multiplicative intensity models. *Biometrics*. 1995;51(4):1469-1482.
23. Minder CE, Bednarski T. A robust method for proportional hazards regression. *Stat Med*. 1996;15(10):1033-1047.
24. Harrell FE, Lee KL, Mark DB. Multivariable prognostic models: issues in developing models, evaluating assumptions and adequacy, and measuring and reducing errors. *Stat Med*. 1996;15(4):361-387.
25. R Development Core Team, R Foundation for Statistical Computing. R: A Language and Environment for Statistical Computing [Internet]. 2009. <http://www.r-project.org>. Accessed March 1, 2012.
26. Therneau TM, Lumley T. Survival analysis, including penalized likelihood. <http://www.r-project.org>. Accessed March 1, 2012.
27. Kao JM, McMillan A, Greenberg PL, et al. Impact of cytopenias on clinical outcomes in myelodysplastic syndrome. *Am J Hematol*. 2008;83(10):765-770.
28. Malcovati L, Della Porta MG, Strupp C, et al. Impact of the degree of anemia on the outcome of patients with myelodysplastic syndrome and its integration into the WHO classification-based Prognostic Scoring System (WPSS). *Haematologica*. 2011;96(10):1433-1440.
29. Sanz GF, Sanz MA, Vallespi T, et al. Two regression models and a scoring system for predicting survival and planning treatment in myelodysplastic syndromes: a multivariate analysis of prognostic factors in 370 patients. *Blood*. 1989;74(1):395-408.
30. Cordoba I, Gonzalez-Porras JR, Such E, et al. The degree of neutropenia has a prognostic impact in low risk myelodysplastic syndrome. *Leuk Res*. 2012;36(3):287-292.
31. Kantarjian H, Giles F, List A, et al. The incidence and impact of thrombocytopenia in myelodysplastic syndromes. *Cancer*. 2007;109(9):1705-1714.
32. Aul C, Gattermann N, Heyll A, et al. Primary myelodysplastic syndromes: analysis of prognostic factors in 235 patients and proposals for an improved scoring system. *Leukemia*. 1992;6(1):52-59.
33. Gonzalez-Porras JR, Cordoba I, Such E, et al. Spanish Myelodysplastic Syndrome Registry: prognostic impact of severe thrombocytopenia in low-risk myelodysplastic syndrome. *Cancer*. 2011;117(24):5529-5537.
34. Morel P, Declercq C, Hebban M, et al. Prognostic factors in myelodysplastic syndromes: critical analysis of the impact of age and gender and failure to identify a very-low-risk group using standard mortality ratio techniques. *Br J Haematol*. 1996;94(1):116-119.
35. Kuendgen A, Strupp C, Aivado M, et al. Myelodysplastic syndromes in patients younger than age 50. *J Clin Oncol*. 2006;24(34):5358-5365.
36. Nösslinger T, Tüchler H, Germing U, et al. Prognostic impact of age and gender in 897 untreated patients with primary myelodysplastic syndromes. *Ann Oncol*. 2010;21(1):120-125.
37. Stauder R, Noesslinger T, Pfeilstöcker M, et al. Impact of age and comorbidity in myelodysplastic syndromes. *J Natl Compr Canc Netw*. 2008;6(9):927-934.
38. Zipperer E, Pelz D, Nachtkamp K, et al. The hematopoietic stem cell transplantation comorbidity index is of prognostic relevance for patients with myelodysplastic syndrome. *Haematologica*. 2009;94(5):729-732.
39. Sperr WR, Wimazal F, Kundi M, et al. Comorbidity as prognostic variable in MDS: comparative evaluation of the HCT-CI and CCI in a core data set of 582 patients of the Austrian MDS Platform. *Ann Oncol*. 2010;21(1):114-119.
40. Park S, Sapena R, Kelaidi C, Ferritin level at diagnosis is not correlated with poorer survival in non RBC transfusion dependent lower risk de novo MDS. *Leuk Res*. 2011;35(11):1530-1533.
41. Deeg HJ, Beckham C, Loken MR, et al. Negative regulators of hemopoiesis and stroma function in patients with myelodysplastic syndrome. *Leuk Lymphoma*. 2000;37(3):405-414.
42. Verma A, List AF. Cytokine targets in the treatment of myelodysplastic syndromes. *Curr Hematol Rep*. 2005;4(6):429-435.
43. Greenberg PL, Attar E, Bennett JM, et al. NCCN Practice Guidelines for in Oncology: myelodysplastic syndromes. *J Natl Compr Canc Netw*. 2011;9(1):30-56.
44. Smith SM, Le Beau MM, Huo D, et al. Clinical-cytogenetic associations in 306 patients with therapy-related myelodysplasia and myeloid leukemia: the University of Chicago series. *Blood*. 2003;102(1):43-52.
45. Bejar R, Stevenson K, Abdel-Wahab O, et al. Clinical effect of point mutations in myelodysplastic syndromes. *N Engl J Med*. 2011;364(26):2496-2506.
46. Papaemmanuil E, Cazzola M, Boultonwood J, et al. Somatic SF3B1 mutation in myelodysplasia with ring sideroblasts. *N Engl J Med*. 2011;365(15):1384-1395.
47. Walter MJ, Shen D, Ding L, et al. Clonal architecture of secondary acute myeloid leukemia. *N Engl J Med*. 2012;366(12):1090-1098.
48. van de Loosdrecht AA, Westers TM, Westra AH, et al. Identification of distinct prognostic subgroups in low- and intermediate-1-risk myelodysplastic syndromes by flow cytometry. *Blood*. 2008;111(3):1067-1077.
49. Westers TM, Ireland R, Wolfgang Kern W, et al. Standardization of flow cytometry in myelodysplastic syndromes: a report from an International Consortium and the European LeukemiaNet Working Group. *Leukemia*. 2012;26(7):1730-1741.
50. Greenberg P, Tuechler H, Schanz J, et al. Revised International Prognostic Scoring System (IPSS-R), developed by the International Prognostic Working Group for Prognosis in MDS (IWG-PM) [abstract]. *Leuk Res*. 2011;35(Suppl 1):S6. Abstract 14.